

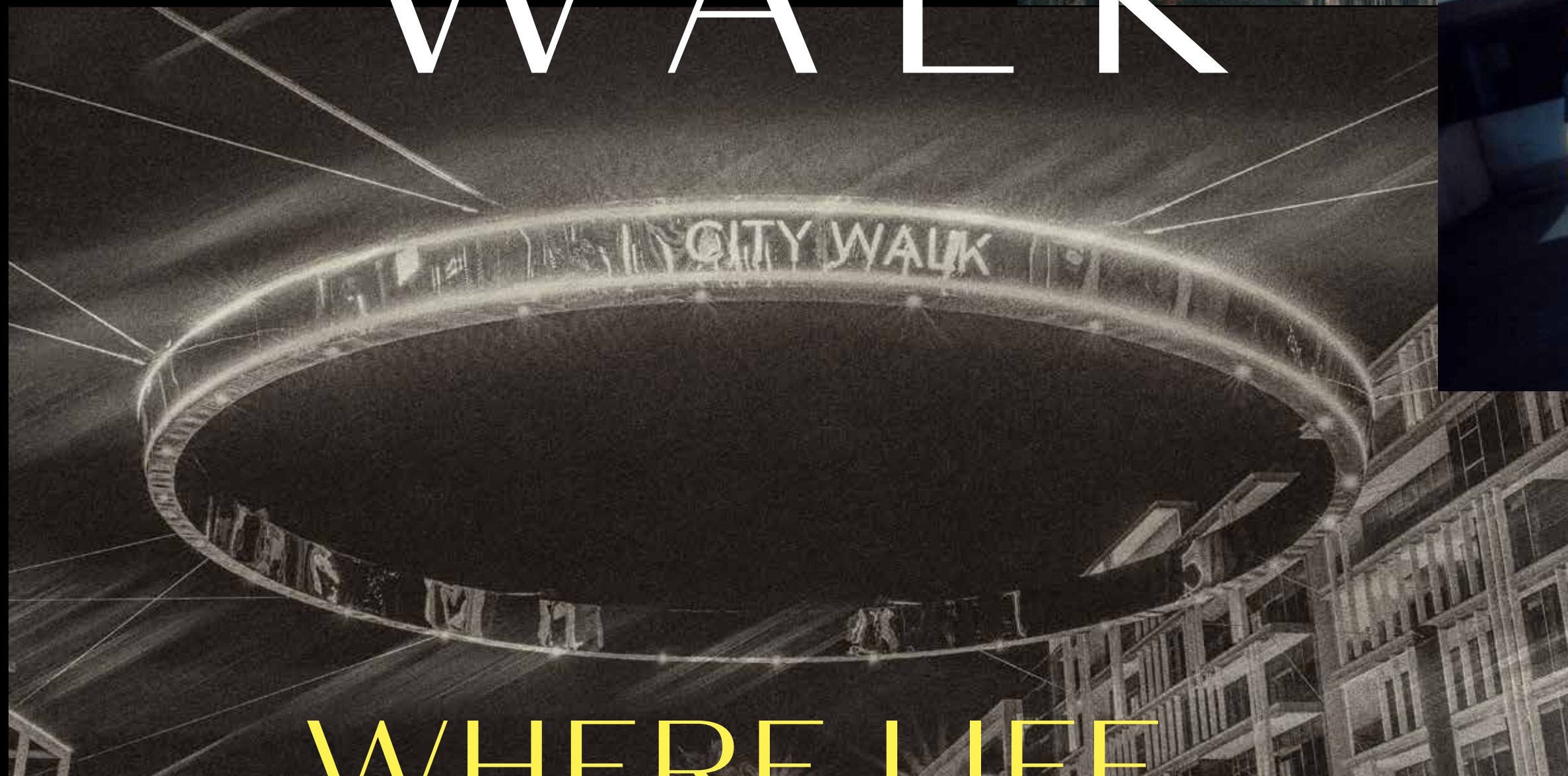
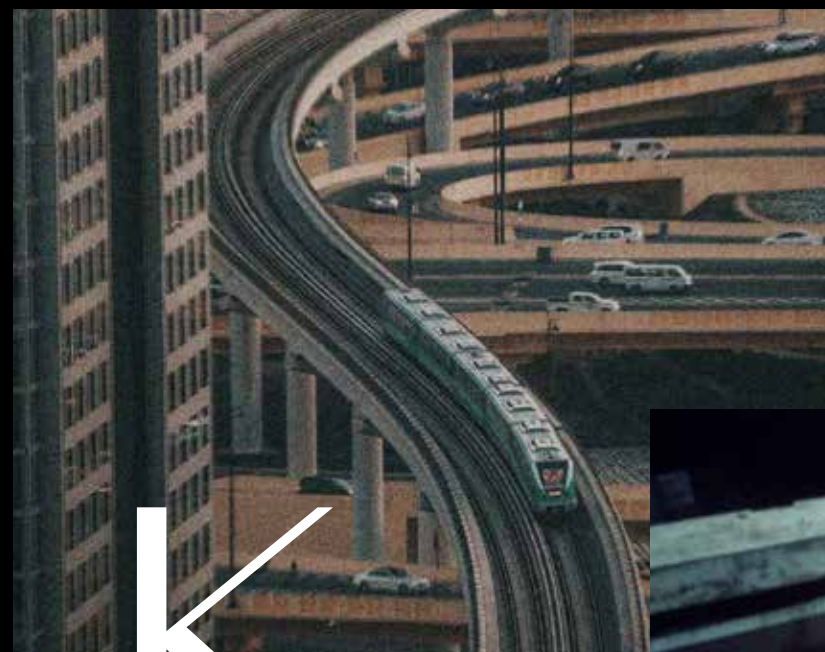


CITY WALK

C R E S T L A N E

 MERAAS

CITY WALK

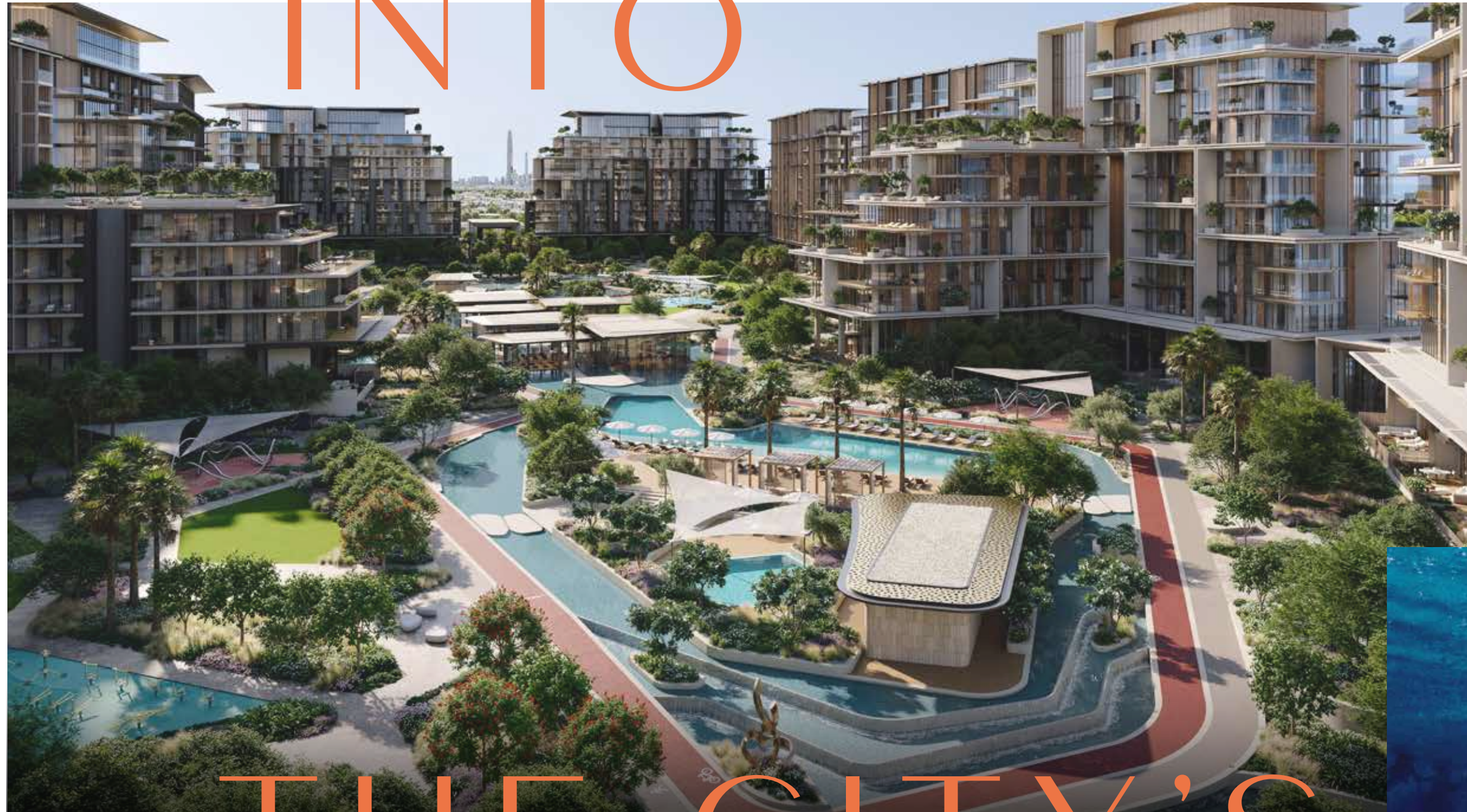


WHERE LIFE
IS LIVED FULLY

City Walk is a creative lifestyle space to live, work, and play in the heart of Dubai. This upscale destination boasts a fusion of international retail offerings, gourmet restaurants, luxurious residences, and hotels, blending cutting-edge design with modern conveniences.

Drawing inspiration from the vibrancy of urban living and easy connectivity, City Walk has evolved into one of the city's most distinguished and recognisable neighbourhoods.

DIVE INTO



At City Walk Crestlane, every corner pulses with energy, and every moment invites you to embrace the beat of the city and the calm of waterside living, creating an experience as dynamic and unique as you are. It's a new vibe. It's a new space. It's a new story.

THE CITY'S RHYTHM



LET WATER SHAPE

Water isn't just a feature at City Walk Crestlane, it's the essence of this masterfully designed community. Every building faces the water, making it the first thing you see, and the last thing you think about.

From tranquil reflections to gentle ripples, water flows through every corner of the community, creating an atmosphere of movement and connection. Whether you're sitting back to enjoy the view, taking a refreshing dip, or gliding through its depths, here, the water draws you into its rhythm.



THE CITY'S BEAT



WHEN THE
RHYTHM FLOWS
LIFE FOLLOWS

NEW BEATS MEET ICONIC STREETS

City Walk Crestlane offers seamless access to Dubai's most iconic landmarks and destinations. Just 10 minutes from the pristine shores of Jumeirah Beach and 5 minutes from the vibrant energy of Downtown Dubai, this prime location connects you to the city through major highways and road networks.

From breathtaking views of Dubai's glittering skyline to the tranquil expanse of the Arabian Gulf, this is a home where the best of both worlds meet. Here, city energy merges with peaceful, refreshing spaces, placing everything you love within reach, right in the heart of City Walk.

CITY WALK CRESTLANE

2
MINUTES FROM
CITY WALK MALL

3
MINUTES FROM
SHEIKH ZAYED ROAD

7
MINUTES FROM
JUMEIRAH BEACH

15
MINUTES FROM
DXB AIRPORT

7
MINUTES FROM
DUBAI MALL

11
MINUTES FROM
DIFC



BURJ AL ARAB

AL WASL ROAD

SHEIKH ZAYED ROAD

AL KHAIL ROAD



J1 BEACH

COCA-COLA
ARENA



BURJ KHALIFA



MEYDAN RACECOURSE

EVERY CORNER SPEAKS URBAN PULSE



01 - WATER FEATURES
02 - SWIMMING POOLS
03 - SPORTS COURTS

04 - KIDS' PLAY AREAS
05 - JOGGING TRACKS
06 - OUTDOOR FITNESS STATIONS

07 - COMMUNITY HUBS
08 - EVENT LAWNS
09 - YOGA AND EXERCISE LAWNS

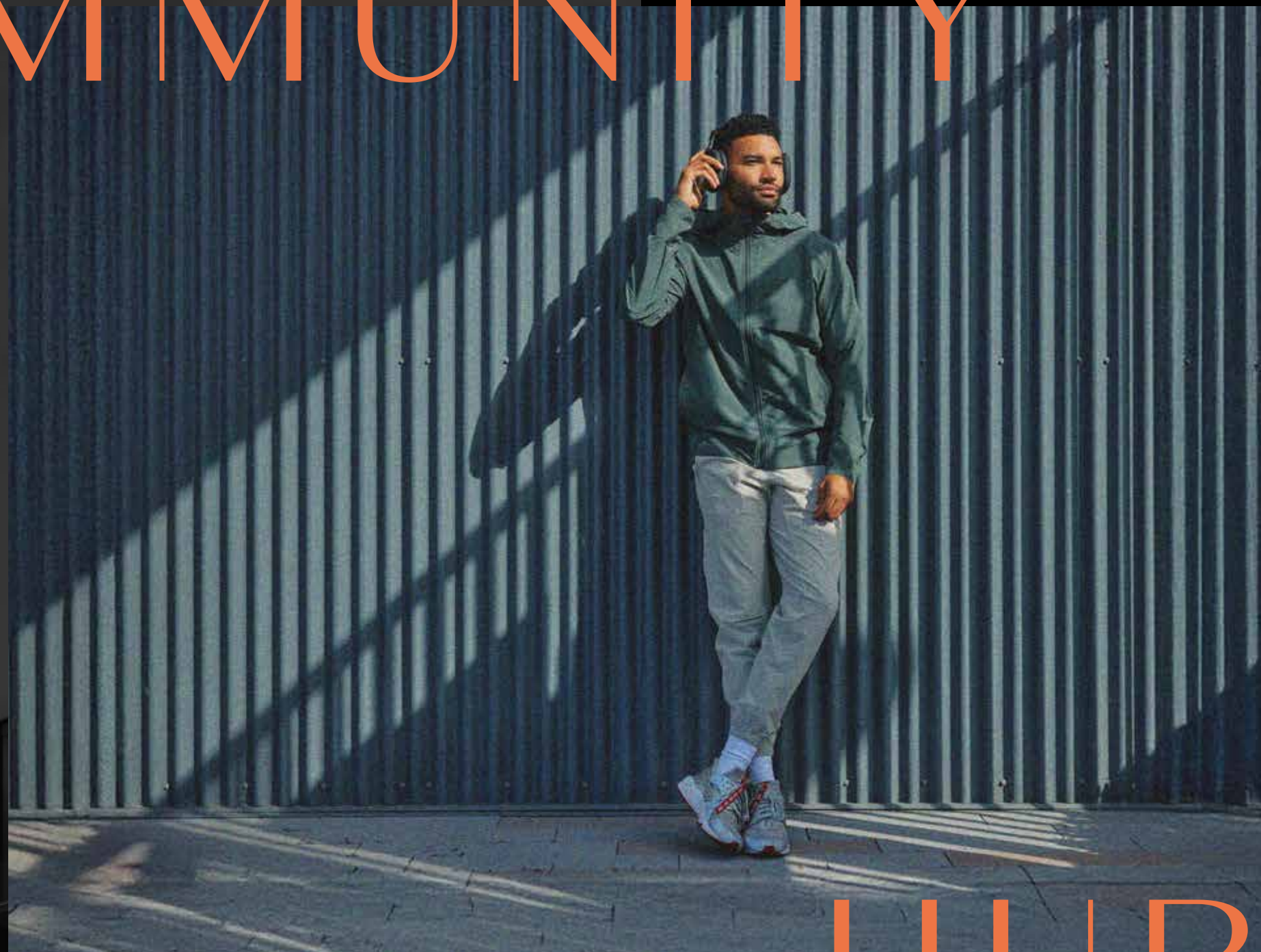
10 - SUNKEN SEATS
11 - FUTURE DEVELOPMENT



NEW
ENERGY

ENDLESS
POSSIBILITIES

COMMUNITY



HUBS

TRAINING STUDIO

The Cardio Space fuels high-energy workouts with cutting-edge equipment, all set against the serene water view. Meanwhile, the Weights Area is designed to push your limits, featuring the latest fitness tech in a space built for strength and power.



YOGA STUDIO



The Yoga Studio is your calm within the storm—a serene escape where panoramic glass walls frame tranquil water views, inviting you to unwind, breathe, and find your balance in perfect harmony.



COMMUNITY LOUNGE

The Community Lounge is a multipurpose space that effortlessly blends indoor and outdoor, featuring a sunken seating area overlooking the pool and waterscape.

Whether you're relaxing, socialising, or creating moments that matter, this is your space to make it happen, with views that inspire and vibes that energise.

COLLABORATIVE SUITE



The Collaborative Suite isn't just a workspace—it's the perfect fusion of productivity and peace, featuring modern workstations and expansive windows with uninterrupted water views to keep your creativity flowing and your vibe perfectly balanced. This space also offers a library, providing a quiet retreat for reading when you need a break, making it the ideal environment to focus, collaborate, and create.

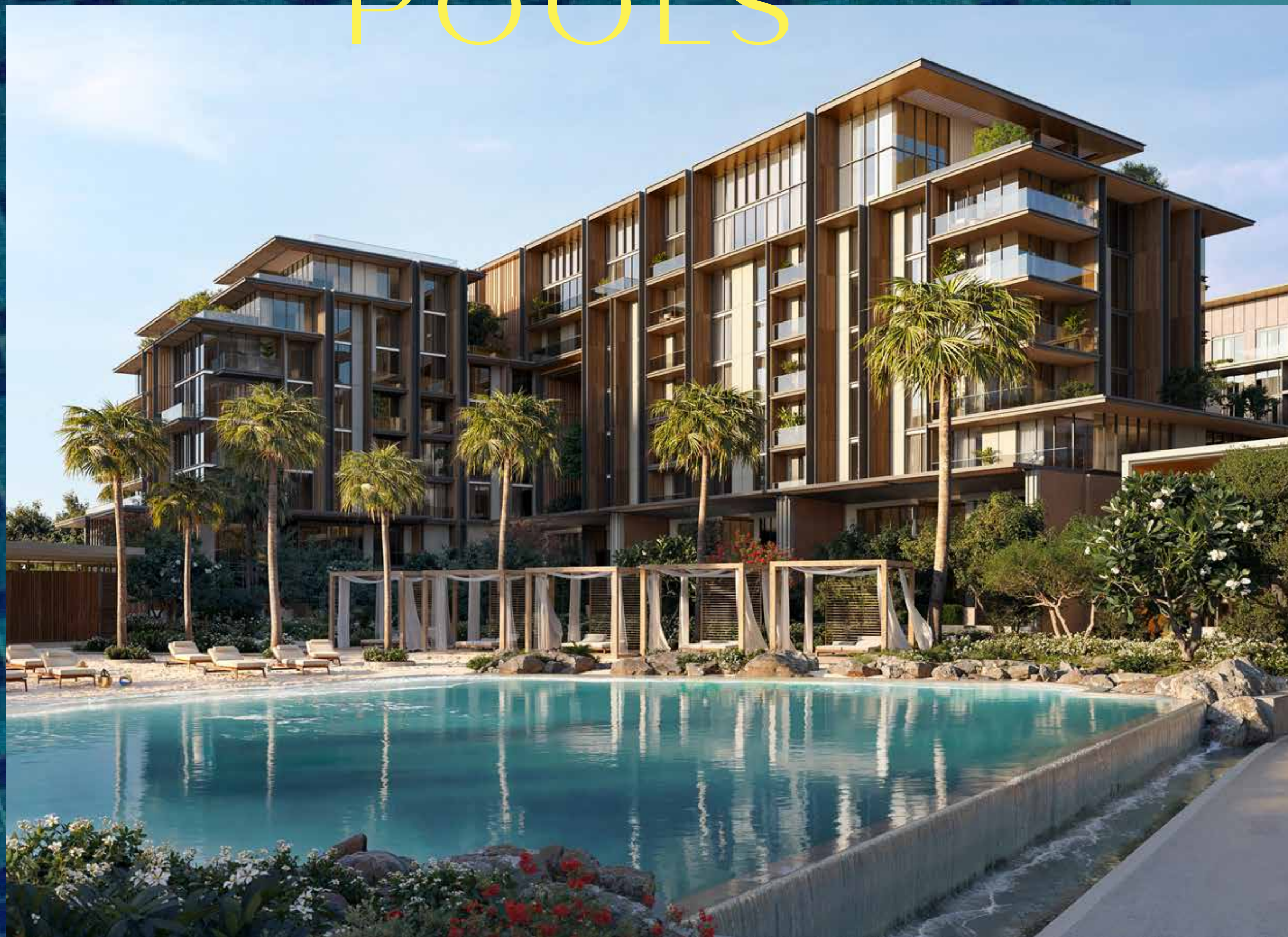


OUTDOOR

EXPERIENCES



SWIMMING POOLS

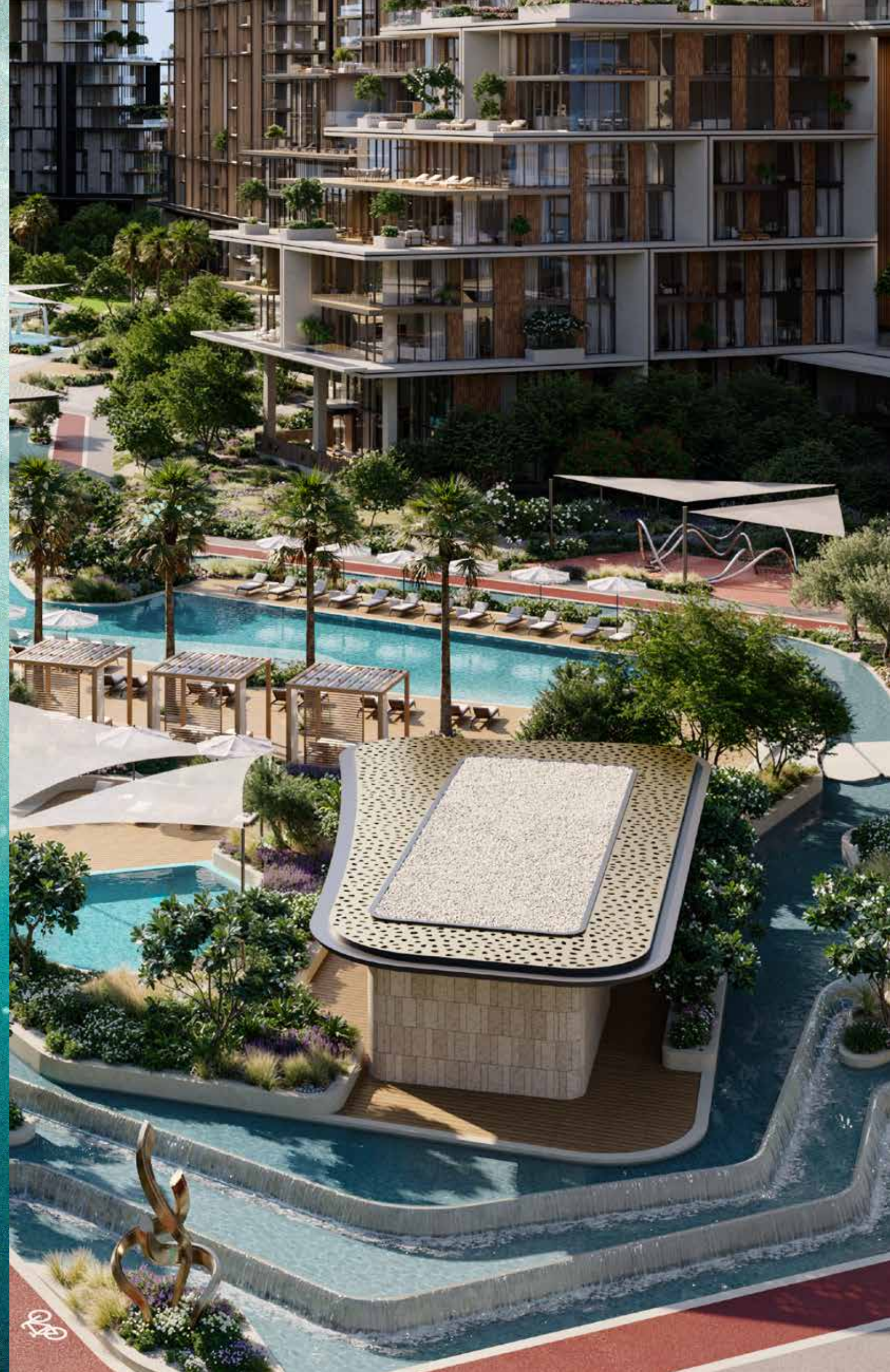


Dive into the refreshing waters, featuring infinity pools, beach-style pools, and dedicated kids' pools. Each space offers the perfect setting for residents to swim, relax, and enjoy quality time with family in a peaceful, resort-style atmosphere.

WATER FEATURES

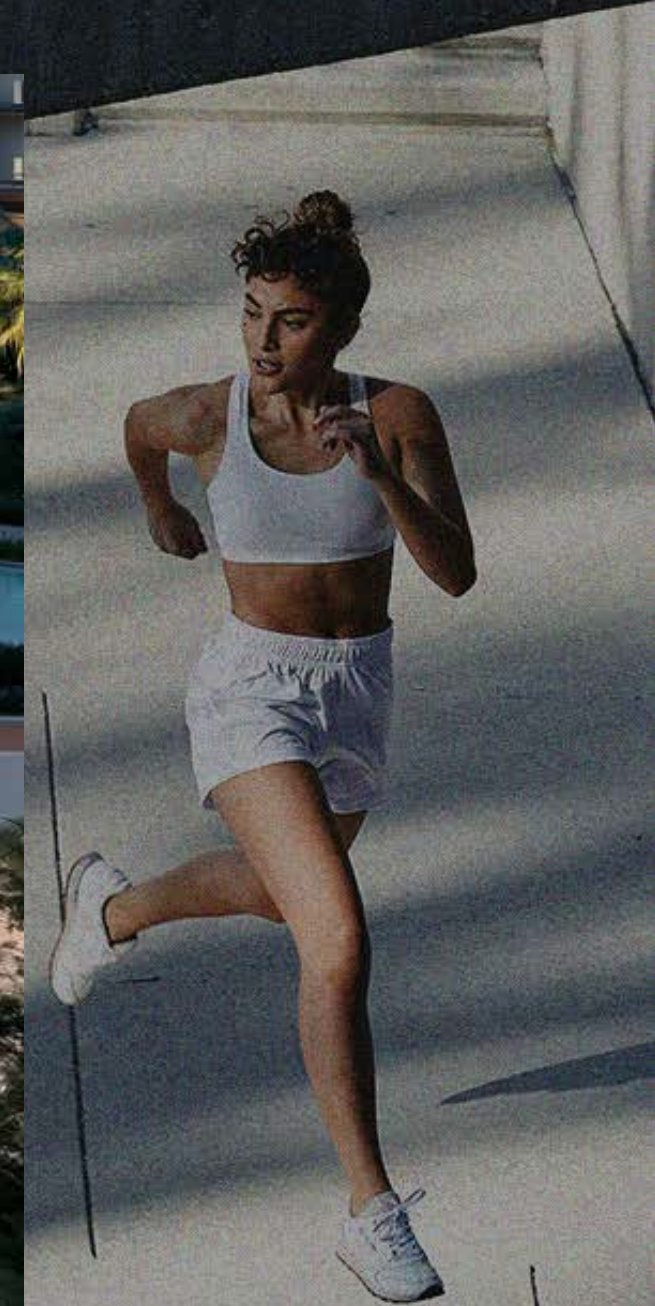


Embrace the community's
ambiance, enhanced by
stunning cascading water
features that set a calming
tone and invite relaxation
and tranquillity throughout.



Hit the winding jogging tracks that cut through lush greenery, offering the perfect route to run, walk, or just vibe with the outdoors. Dedicated cycling

lanes curve with the terrain, giving both fitness enthusiasts and casual riders a chance to enjoy the community's vibrant, natural energy.



ACTIVE TRACKS

SPORTS COURTS



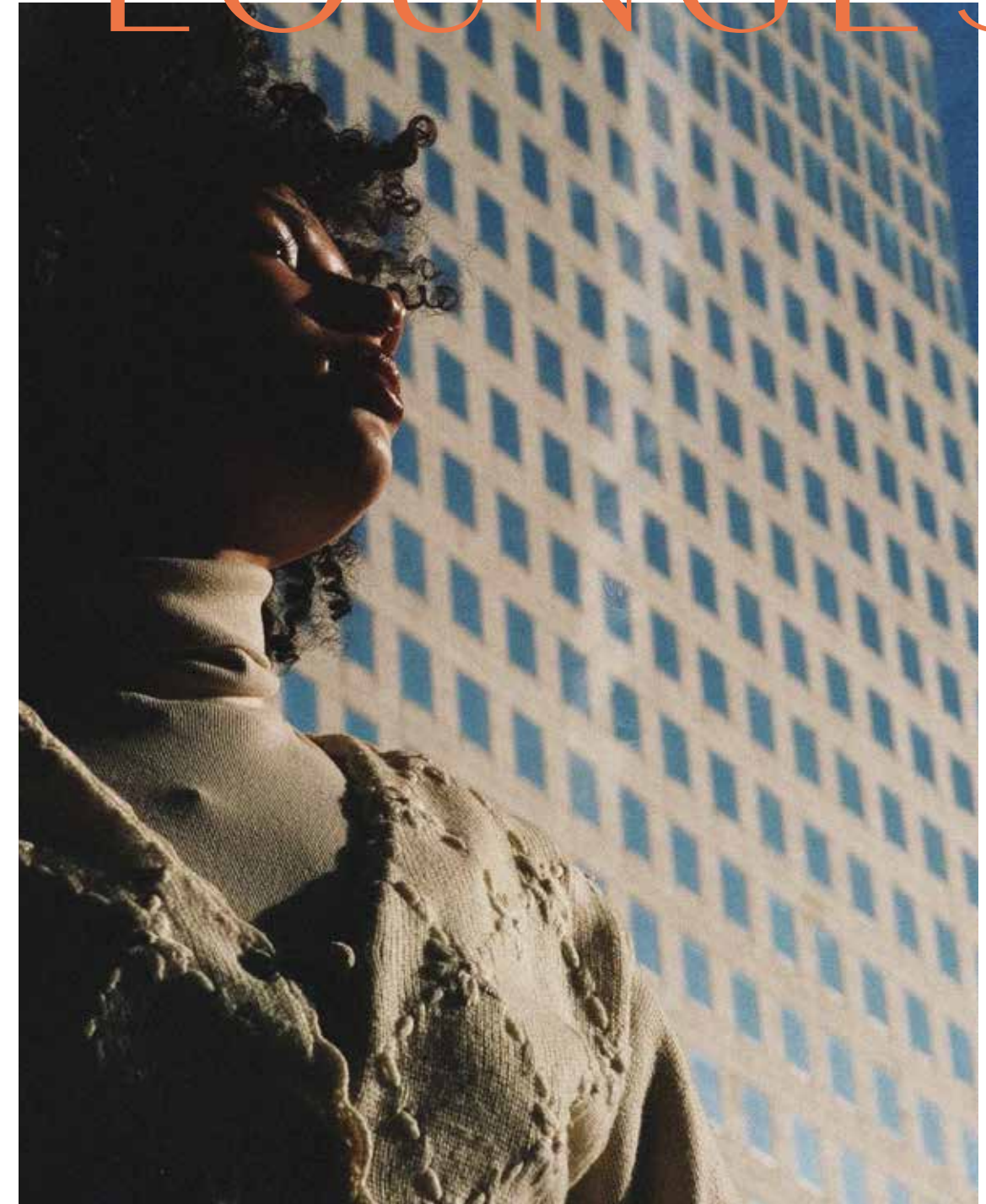
Experience world-class Padel and Tennis Courts, where casual games meet intense competition, set in a vibrant, dynamic outdoor environment that pulses with energy.

EVENT LAWNS

Set the stage on the Event Lawns for unforgettable gatherings, from community events to exclusive celebrations, where the energy comes alive.



SUNKEN LOUNGES



Immerse yourself in the serenity of sunken seating nestled in water, offering a peaceful retreat amidst lush surroundings.

PLAY AREAS



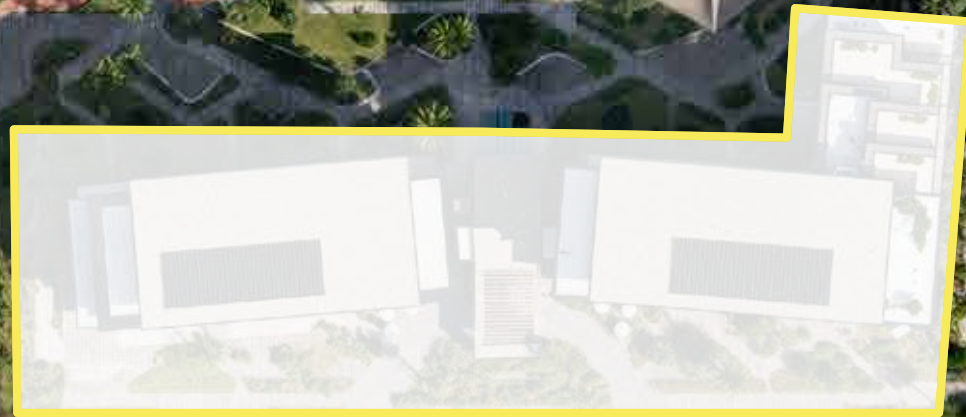
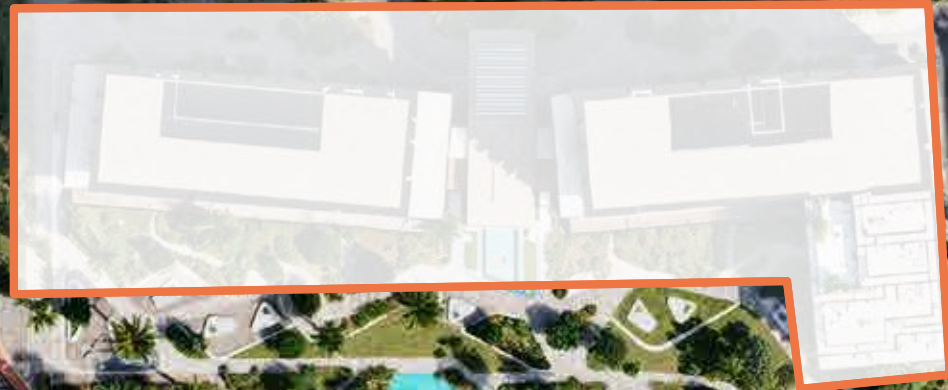
Discover an engaging corner where children can explore, play, and learn with interactive equipment and creative play zones.

A modern high-rise apartment complex at dusk. The building features a mix of glass and wood paneling, with balconies and large windows. The interior lights are on, and some balconies have glass railings. In the foreground, there is a landscaped courtyard with trees, shrubs, and a winding path. A swimming pool is visible on the right side of the image. The sky is a deep blue with some clouds.

A NEW
PULSE

IN THE
CITY

CITY WALK
CRESTLANE 3



CITY WALK
CRESTLANE 2



NEW LAUNCH



NEW VIBE

Introducing City Walk Crestlane 2 and 3, perfectly located in the dynamic centre of the city. These one-of-a-kind residences capture the essence of exclusivity, urban convenience, and vibrant community living, adding rhythm to your life. Each includes two mid-rise towers with direct access to water features and the park, offering an escape right in the city's core.

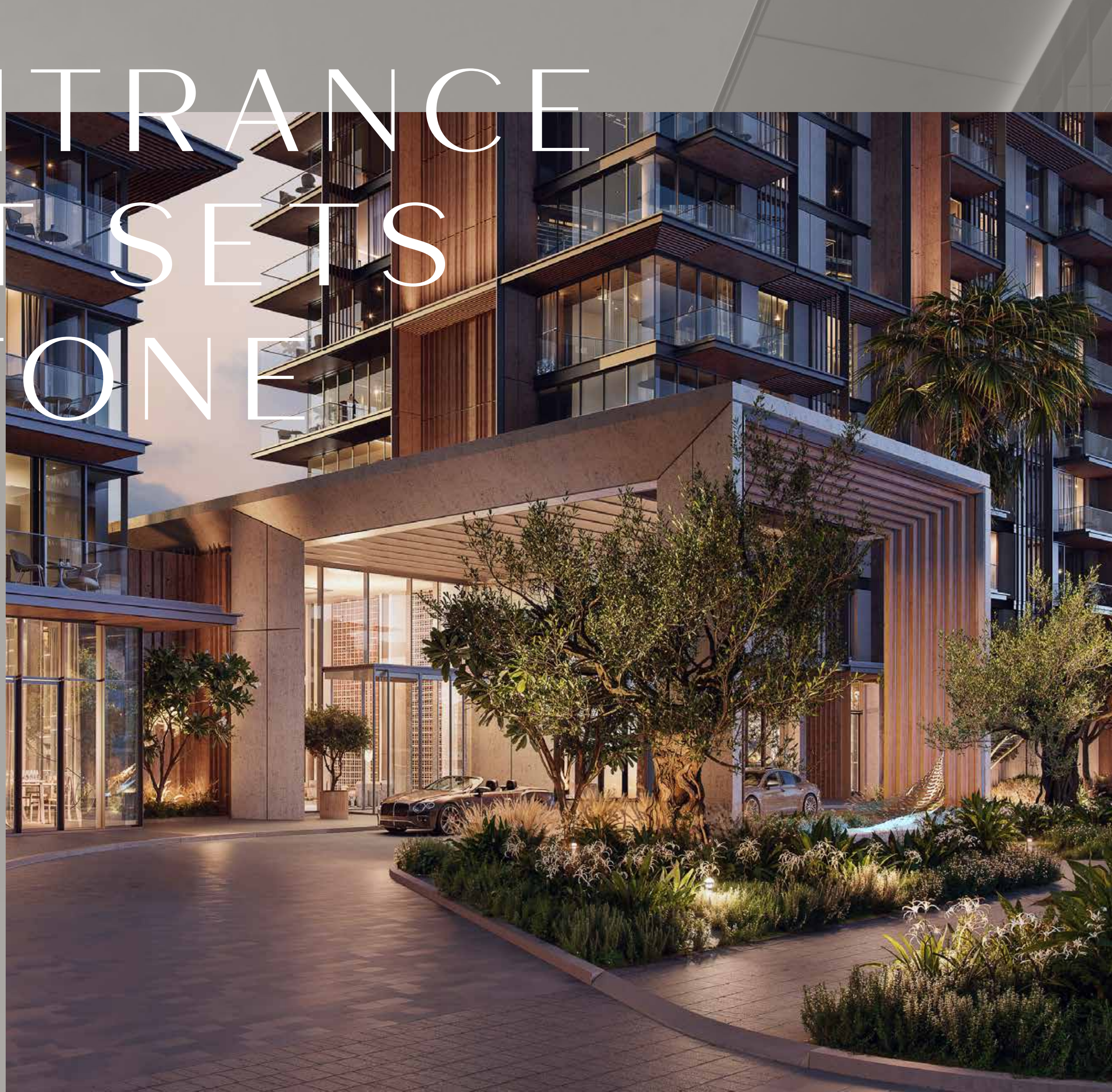
STEP
OUT




LIVE
THE VIBE

AN ENTRANCE THAT SETS THE TONE

Pull up to a sleek drop-off that redefines first impressions. Crafted to merge warmth with sophistication, this grand entrance sets the tone for a refined living experience from the very first step.



A modern, double-height lobby with a grid wall, concrete pillars, and a large bowl sculpture.

Step into a breathtaking double-height lobby, where the entrance itself makes a bold statement. With panoramic views of the community, this space defines the dynamic living experience that awaits.

A STATEMENT IN EVERY DETAIL



FEEL THE VIBE

MOVE WITH THE CITY

Experience outdoor spaces that pulse with life and connection. These terraces are crafted for everything from wellness sessions to lively gatherings. With lush green spaces woven throughout the building, you'll

always find the perfect place to recharge or engage. At the top, the sky deck unfolds panoramic views of the Dubai skyline, bringing the city's energy right to your doorstep.



WHERE FUN NEVER ENDS



Discover themed indoor kids' play areas in each building, designed to spark creativity

and joy. These playful rooms provide children with a safe and exciting environment to explore.

URBAN
RESIDENCES



THAT FIT
YOUR FLOW



1 TO 3-BEDROOM APARTMENTS

Experience contemporary living with park-facing and water views, enhanced by thoughtfully designed interiors. Tailored for modern lifestyles, these apartments feature high-quality finishes and spacious layouts that maximise comfort and elegance. Kitchens are sleek and practical, crafted with premium materials, while expansive bedrooms with walk-in closets offer both convenience and sophistication.























SIGNATURE 3 TO 4-BEDROOM APARTMENTS

Step into the signature 3 to 4-bedroom apartments, where bold design meets urban elegance. Double-height living areas lead to expansive park-facing terraces with tranquil water views, offering uninterrupted panoramas and a dramatic sense of space. Select units boast sweeping 180-degree views that bring the city's energy to life. In the 4-bedroom residences, bathrooms are enhanced with striking glass façades that flood the interiors with natural light and create a seamless connection to the city's skyline.

















4-BEDROOM DUPLLEXES

Elevate your living experience with the 4-bedroom duplex units, where every detail defines luxury. Double-height living areas flow effortlessly onto private terraces with direct park access and serene water views, blurring the lines between indoors and outdoors to create a perfect blend of style, functionality, and modern living. Exclusive private lift access from designated parking ensures privacy, while bright, expansive interiors amplify the sense of boundless space.



















NEW
SPACE

NEW
STORY

MERAAS



A LEADING MASTER DEVELOPER

Meraas is dedicated to enhancing Dubai's global real estate position through a diverse portfolio of master developments, land and properties, including iconic destinations such as Port de La Mer, Bluewaters Residences, Nad Al Sheba Gardens, Nikki Beach Residences, and BVLGARI Residences, to name a few.

Meraas values sophistication and innovation to deliver exceptional residential experiences for a global clientele.

