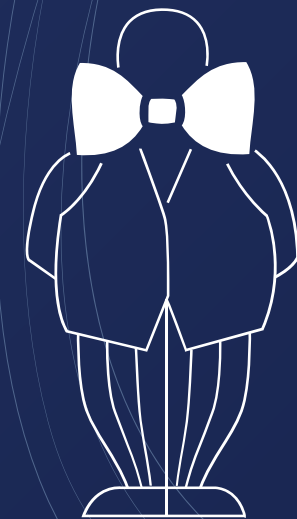


ALTA

REAL ESTATE DEVELOPMENT



Mr. C
RESIDENCES
Downtown

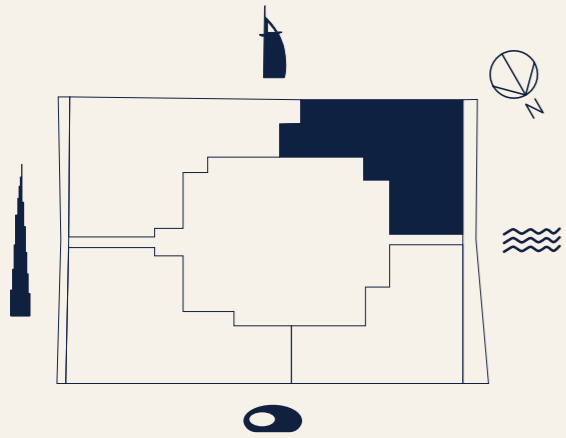
BY
IGNAZIO
AND
MAGGIO
CIPRIANI

2 BED
 TYPE LS
 UNIT 02
 FLOOR 11-32

INTERNAL AREA
 1,976 sq ft (184 sq m)

EXTERNAL AREA
 from 300 sq ft (28 sq m)
 to 439 sq ft (41 sq m)

TOTAL AREA
 from 2,276 sq ft (211 sq m)
 to 2,415 sq ft (224 sq m)



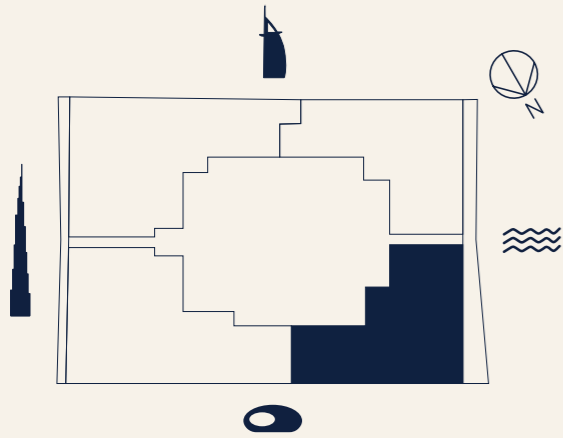
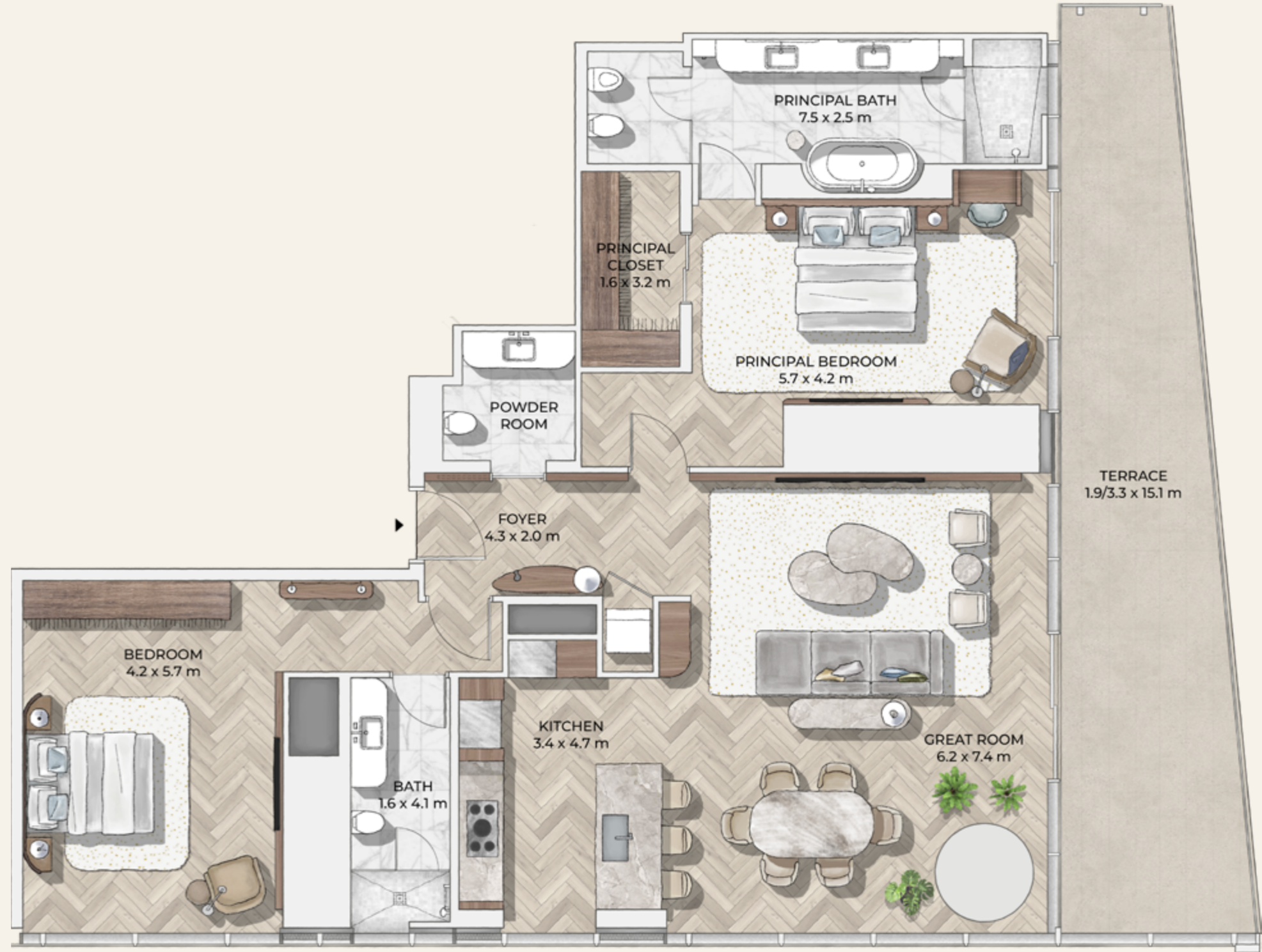
All information in the layout depicts the current status of the project but may be subject to change once final approval from the authorities is obtained. Drawings are an artistic impression for marketing purposes and are not to scale. The size, shape and position of windows, doors, ducts, columns, terraces and balconies are subject to change during final coordination. The furniture is to indicate the space available and the likely position of electrical points. It is not part of the standard fixtures.

2 BED
TYPE LN
UNIT 03
FLOOR 11-32

INTERNAL AREA
1,986 sq ft (185 sq m)

EXTERNAL AREA
from 291 sq ft (27 sq m)
to 412 sq ft (38 sq m)

TOTAL AREA
from 2,227 sq ft (212 sq m)
to 2,398 sq ft (223 sq m)



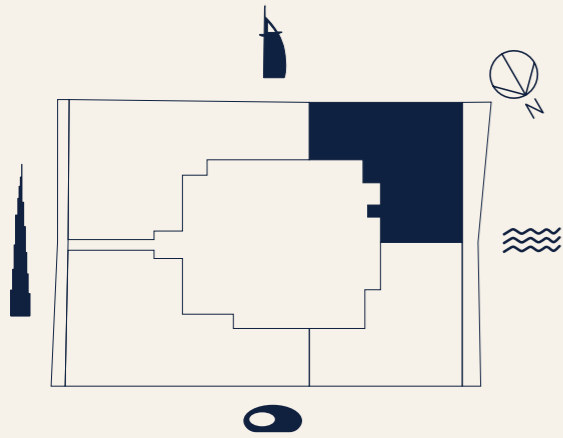
All information in the layout depicts the current status of the project but may be subject to change once final approval from the authorities is obtained. Drawings are an artistic impression for marketing purposes and are not to scale. The size, shape and position of windows, doors, ducts, columns, terraces and balconies are subject to change during final coordination. The furniture is to indicate the space available and the likely position of electrical points. It is not part of the standard fixtures.

2 BED
 TYPE HS
 UNIT 02
 FLOOR 34-44

INTERNAL AREA
 1,933 sq ft (180 sq m)

EXTERNAL AREA
 from 292 sq ft (27 sq m)
 to 412 sq ft (38 sq m)

TOTAL AREA
 from 2,225 sq ft (207 sq m)
 to 2,345 sq ft (218 sq m)



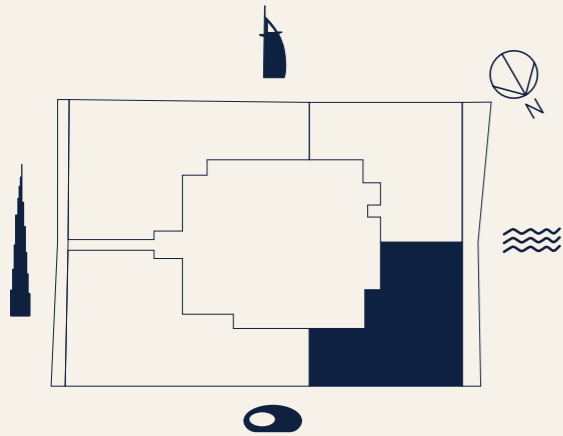
All information in the layout depicts the current status of the project but may be subject to change once final approval from the authorities is obtained. Drawings are an artistic impression for marketing purposes and are not to scale. The size, shape and position of windows, doors, ducts, columns, terraces and balconies are subject to change during final coordination. The furniture is to indicate the space available and the likely position of electrical points. It is not part of the standard fixtures.

2 BED
TYPE HN
UNIT 03
FLOOR 34-44

INTERNAL AREA
1,945 sq ft (181 sq m)

EXTERNAL AREA
from 305 sq ft (28 sq m)
to 438 sq ft (41 sq m)

TOTAL AREA
from 2,251 sq ft (209 sq m)
to 2,384 sq ft (222 sq m)



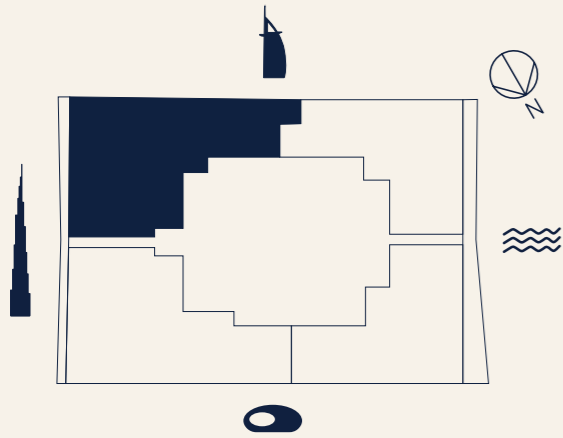
All information in the layout depicts the current status of the project but may be subject to change once final approval from the authorities is obtained. Drawings are an artistic impression for marketing purposes and are not to scale. The size, shape and position of windows, doors, ducts, columns, terraces and balconies are subject to change during final coordination. The furniture is to indicate the space available and the likely position of electrical points. It is not part of the standard fixtures.

3 BED
TYPE LS
UNIT 01
FLOOR 11-32

INTERNAL AREA
 2,839 sq ft (264 sq m)

EXTERNAL AREA
 from 176 sq ft (16 sq m)
 to 230 sq ft (21 sq m)

TOTAL AREA
 from 3,015 sq ft (280 sq m)
 to 3,069 sq ft (285 sq m)



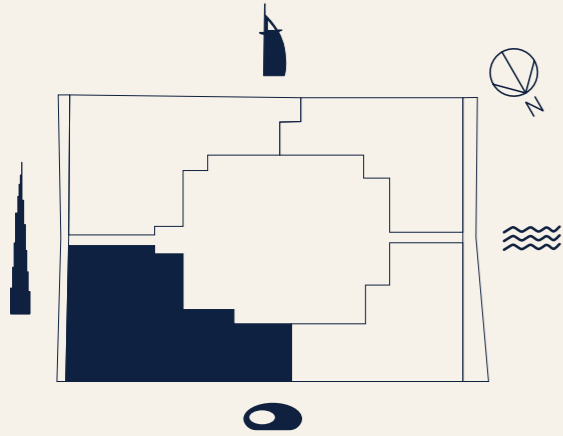
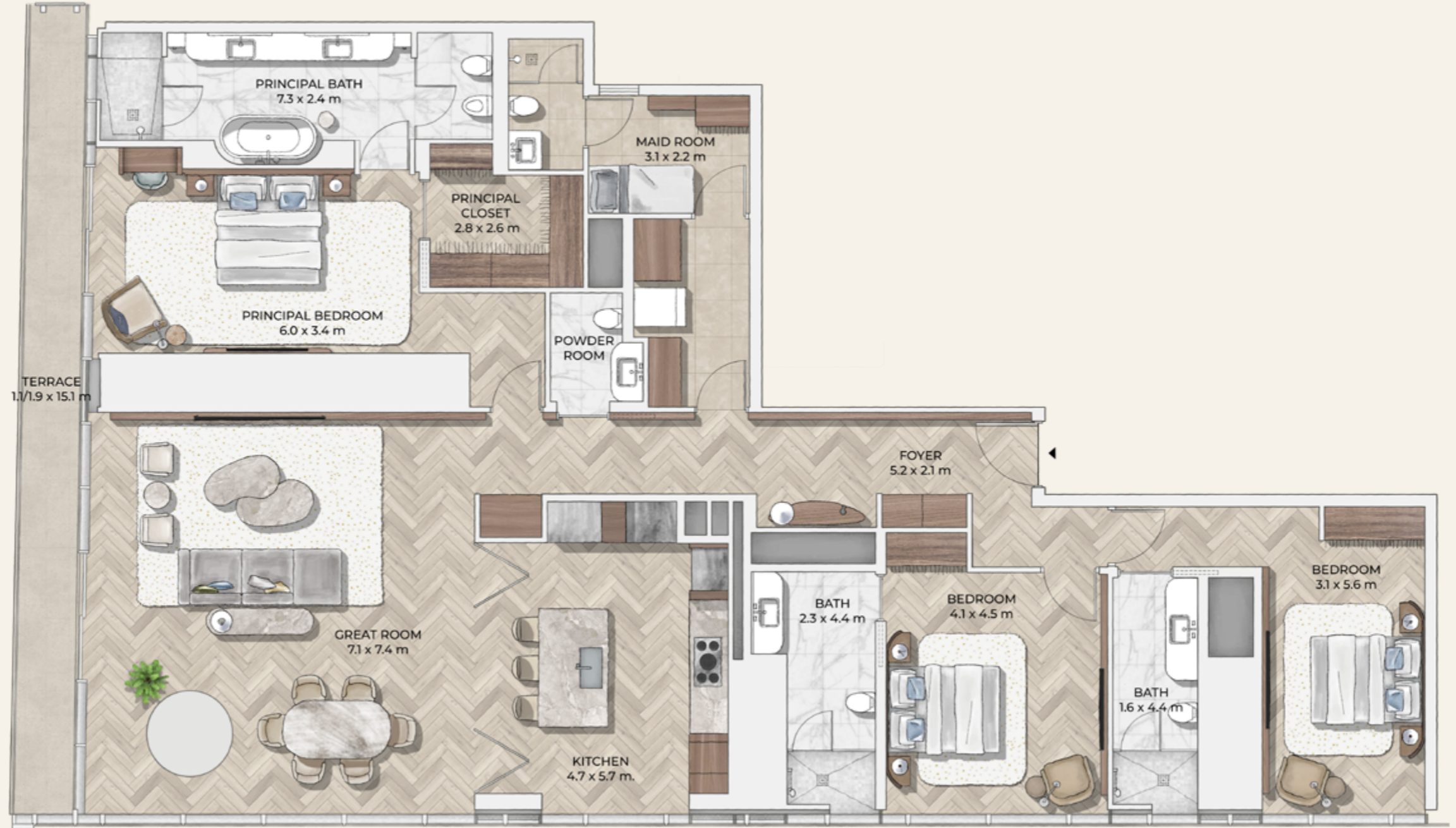
All information in the layout depicts the current status of the project but may be subject to change once final approval from the authorities is obtained. Drawings are an artistic impression for marketing purposes and are not to scale. The size, shape and position of windows, doors, ducts, columns, terraces and balconies are subject to change during final coordination. The furniture is to indicate the space available and the likely position of electrical points. It is not part of the standard fixtures.

3 BED
TYPE LN
UNIT 04
FLOOR 11-32

INTERNAL AREA
 2,914 sq ft (271 sq m)

EXTERNAL AREA
 from 182 sq ft (17 sq m)
 to 245 sq ft (23 sq m)

TOTAL AREA
 from 3,097 sq ft (288 sq m)
 to 3,157 sq ft (293 sq m)



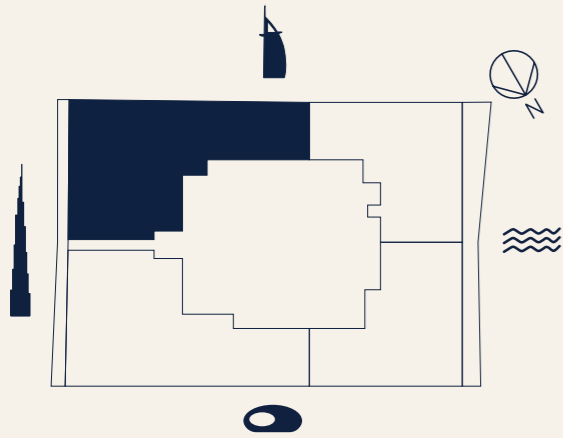
All information in the layout depicts the current status of the project but may be subject to change once final approval from the authorities is obtained. Drawings are an artistic impression for marketing purposes and are not to scale. The size, shape and position of windows, doors, ducts, columns, terraces and balconies are subject to change during final coordination. The furniture is to indicate the space available and the likely position of electrical points. It is not part of the standard fixtures.

3 BED
 TYPE HS
 UNIT 01
 FLOOR 34-44

INTERNAL AREA
 2,901 sq ft (270 sq m)

EXTERNAL AREA
 from 190 sq ft (18 sq m)
 to 242 sq ft (22 sq m)

TOTAL AREA
 from 3,091 sq ft (288 sq m)
 to 3,143 sq ft (292 sq m)



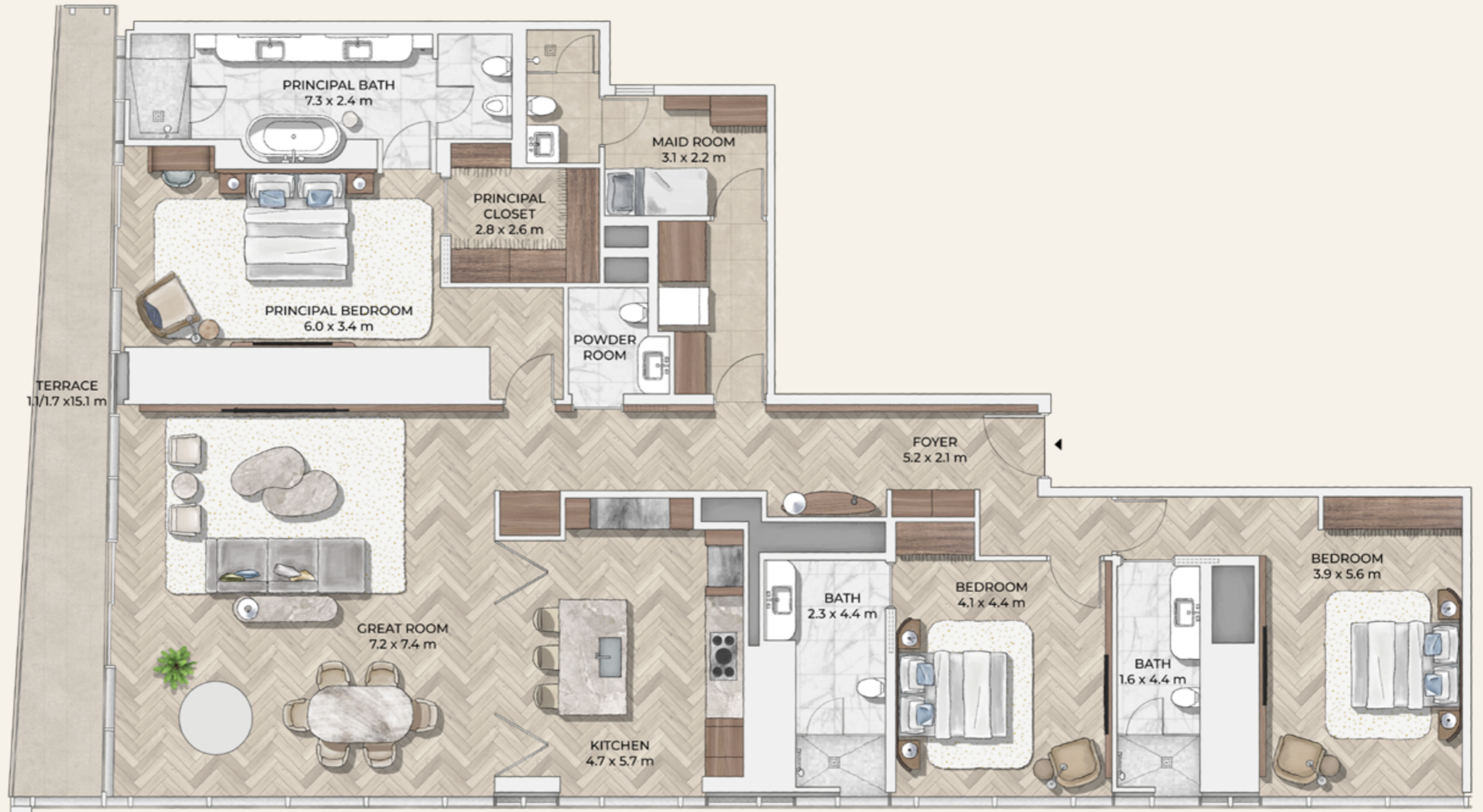
All information in the layout depicts the current status of the project but may be subject to change once final approval from the authorities is obtained. Drawings are an artistic impression for marketing purposes and are not to scale. The size, shape and position of windows, doors, ducts, columns, terraces and balconies are subject to change during final coordination. The furniture is to indicate the space available and the likely position of electrical points. It is not part of the standard fixtures.

3 BED
TYPE HN
UNIT 04
FLOOR 34-44

INTERNAL AREA
 2,978 sq ft (277 sq m)

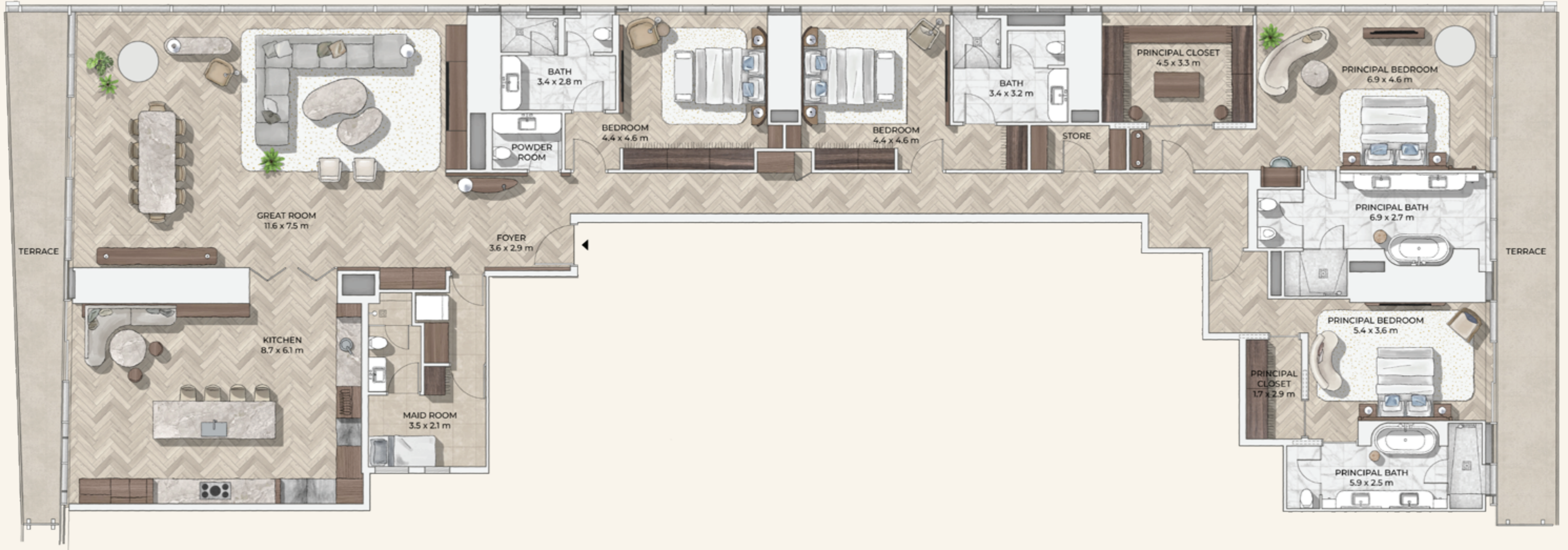
EXTERNAL AREA
 from 179 sq ft (17 sq m)
 to 233 sq ft (22 sq m)

TOTAL AREA
 from 3,158 sq ft (294 sq m)
 to 3,211 sq ft (299 sq m)



All information in the layout depicts the current status of the project but may be subject to change once final approval from the authorities is obtained. Drawings are an artistic impression for marketing purposes and are not to scale. The size, shape and position of windows, doors, ducts, columns, terraces and balconies are subject to change during final coordination. The furniture is to indicate the space available and the likely position of electrical points. It is not part of the standard fixtures.

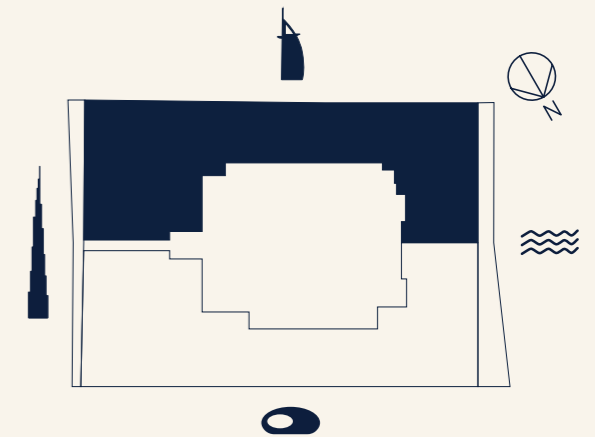
4 BED
TYPE S
UNIT 01
FLOOR 45-55



INTERNAL AREA
 4,746 sq ft (441 sq m)

EXTERNAL AREA
 from 531 sq ft (49 sq m)
 to 586 sq ft (54 sq m)

TOTAL AREA
 from 5,278 sq ft (490 sq m)
 to 5,332 sq ft (495 sq m)



All information in the layout depicts the current status of the project but may be subject to change once final approval from the authorities is obtained. Drawings are an artistic impression for marketing purposes and are not to scale. The size, shape and position of windows, doors, ducts, columns, terraces and balconies are subject to change during final coordination. The furniture is to indicate the space available and the likely position of electrical points. It is not part of the standard fixtures.

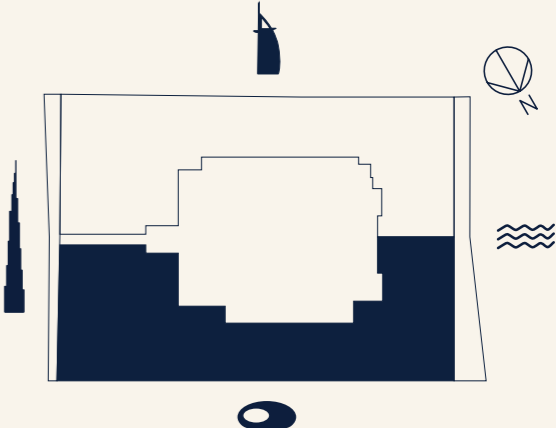
4 BED
TYPE N
UNIT 02
FLOOR 45-55



INTERNAL AREA
 4,997 sq ft (464 sq m)

EXTERNAL AREA
 from 551 sq ft (51 sq m)
 to 617 sq ft (57 sq m)

TOTAL AREA
 from 5,548 sq ft (515 sq m)
 to 5,614 sq ft (521 sq m)



All information in the layout depicts the current status of the project but may be subject to change once final approval from the authorities is obtained. Drawings are an artistic impression for marketing purposes and are not to scale. The size, shape and position of windows, doors, ducts, columns, terraces and balconies are subject to change during final coordination. The furniture is to indicate the space available and the likely position of electrical points. It is not part of the standard fixtures.