

THE QUAYSIDE

BY ELLINGTON

A TRANQUIL OASIS AMIDST THE URBAN PULSE OF DUBAI

A close-up photograph of a hand on a boat's steering wheel. The wheel is white with a red grip. The background is a view of the water through a windshield covered in water droplets. The scene is lit with warm, golden light, suggesting a sunset or sunrise. The text is overlaid on the right side of the image.

DRIVEN BY CONTEMPORARY DESIGN

Meticulously designed residences, breathtakingly communal spaces and resort-style amenities curated to elicit relaxation and interconnectivity. The Quayside by Ellington matches a sensory journey with the utmost in liveability.


THE QUAYSIDE

BY ELLINGTON

Inspired by its peerless location overlooking Dubai's iconic skyline and the shimmering, ever-changing waterways, driven by chic contemporary design and crafted to enable life lived in style, The Quayside by Ellington Properties is an architectural expression of modern excellence. Located in the heart of Business Bay, relaxation and tranquillity can be uncovered amidst the pulse of Dubai's most dynamic neighbourhood.

Sensorial, experiential and designed to allow disconnection and interconnectivity alike, living downtown in Business Bay never felt more tranquil, therapeutic and fulfilling.



A man and a woman are riding bicycles on a modern bridge. The man is on the left, wearing a dark shirt and jeans, riding a black bicycle. The woman is on the right, wearing a white t-shirt and dark pants, riding a white bicycle. They are both smiling and looking forward. The bridge has a metal railing with horizontal bars. The background shows a sunset with warm, golden light and a blurred cityscape. The overall mood is relaxed and active.

RELAXED LIVING IN A DYNAMIC NEIGHBOURHOOD

The Quayside has been meticulously crafted to bring the best of all worlds into the reality of everyday living. For those seeking a truly unique aesthetic matched by bespoke excellence - surrounded by tranquil outdoor spaces, sumptuous dining establishments and superb connectivity to the heart of the city - The Quayside elevates life to a whole new level.

A close-up photograph of a woman with blonde hair, wearing a white blazer over a black top with intricate gold and silver sequin detailing. She is also wearing a gold chain necklace. The background is softly blurred, showing a textured green cushion and a wooden surface.

PLETHORA OF THE CITY

Within reach of all major attractions and a plethora of the city's most esteemed restaurants, commercial districts and more. The Quayside at Business Bay is living proof that you truly can have it all.



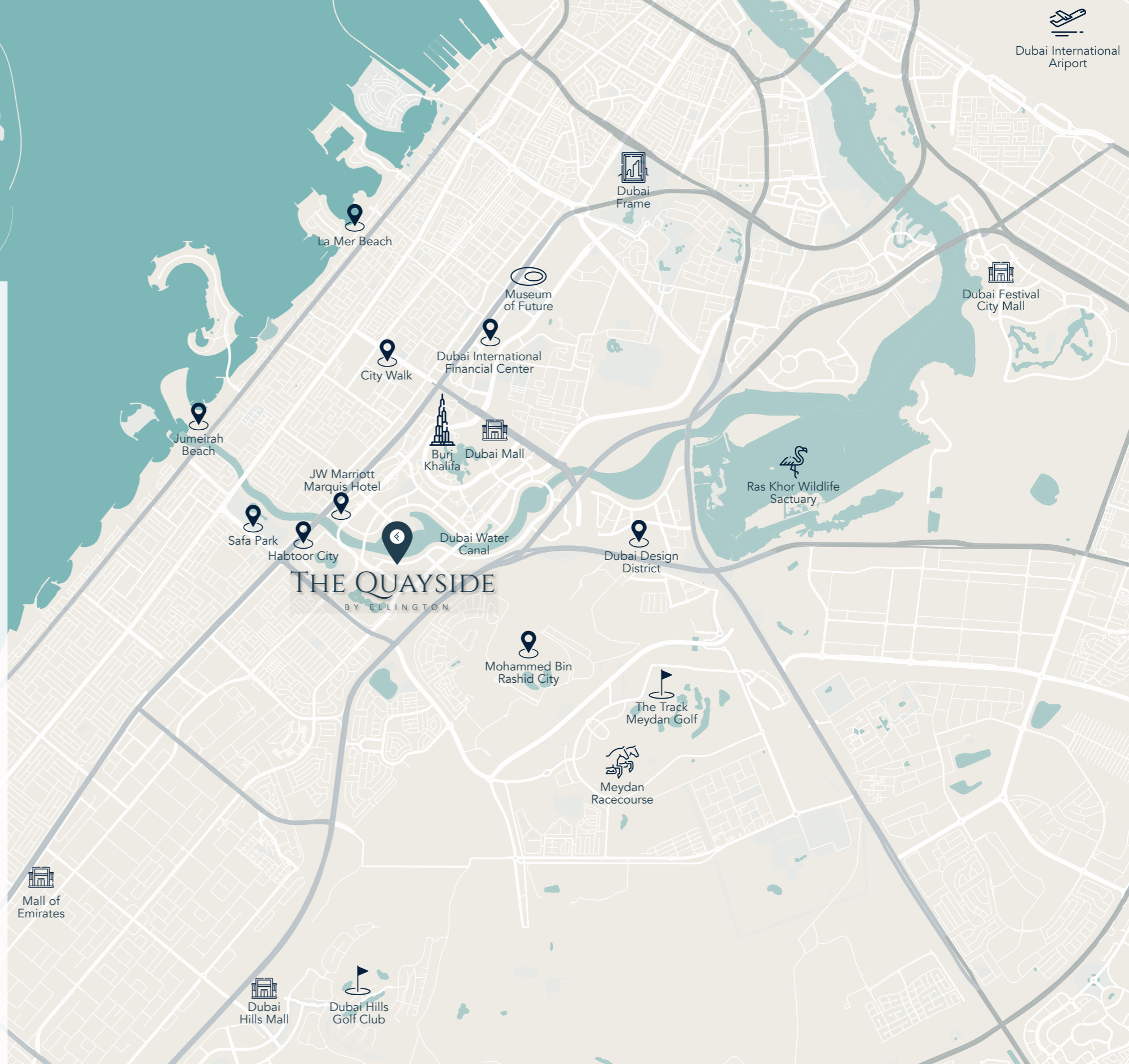
THE UNWAVERING DUBAI WATER CANAL

The Dubai Water Canal meanders its way to the glittering Gulf, lined with the very best the city has to offer alongside beautiful open spaces - from high-flying entrepreneurs to families seeking a tranquil and safe oasis. The Quayside offers opportunities for all to find a sense of home.

DRIVING DISTANCES

- 05 **MINUTES**
Business Bay Metro Station
- 11 **MINUTES**
Dubai Mall / Burj Khalifa
- 12 **MINUTES**
Museum of the Future
- 14 **MINUTES**
City Walk
- 15 **MINUTES**
Meydan Golf Course
- 16 **MINUTES**
Dubai International Financial Centre

- 16 **MINUTES**
Mall of the Emirates
- 17 **MINUTES**
Dubai Design District
- 18 **MINUTES**
Dubai International Airport
- 20 **MINUTES**
La Mer Beach
- 20 **MINUTES**
Burj Al Arab
- 22 **MINUTES**
Palm Jumeirah




 Dubai International Airport

 Dubai Festival City Mall

 Ras Khor Wildlife Sanctuary

 Dubai Frame

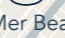
 Museum of Future

 Burj Khalifa
Dubai Mall

 City Walk

 JW Marriott Marquis Hotel


 Jumeirah Beach

 La Mer Beach

 The World Islands

 Mall of Emirates

 Dubai Hills Mall

 Dubai Hills Golf Club

 Mohammed Bin Rashid City

 Meydan Racecourse

 The Track Meydan Golf

 Dubai Design District

 Dubai Water Canal

 Safa Park

 Habtoor City



ELLINGTON
PROPERTY



A PLACE WITH A VISION

In a city where aspirations know no bounds, excellence is only the beginning. The Quayside ensure that each and every day brings with it an essence of delight, driven by bold contemporary design and crafted with all of life's adventures at their heart.

Artistic yet built with daily practicality in mind, liberated from the hustle and bustle of the city yet deeply interconnected to urbane sophistication, Ellington Properties elevates living to new heights of sensorial savoir faire.



ELLINGTON
PROPERTIES



**INTERLINKED DESIGN
MEETS THE CITY**

Where pristine spaces provide an expansive sense of bliss, resort-like living harmonises with the city's pulse and breathtaking views provide constant inspiration, life at The Quayside goes above and beyond the everyday. At Ellington Properties, contemporary interiors, welcoming streetscapes and artistry coexist with heritage, culture and effortless charm. This is life lived without limits, a voyage of the senses with a design-led core.



We bring harmony to living with peerless surroundings, flawless amenities and showstopping design, with every aspect of our homes and their environs crafted to exceed all expectations. A playful juxtaposition of dynamic urban opportunities and utter tranquility. The Quayside's amenities unveils city life at its most alluring.



UNOBSTRUCTED VISTA OF DOWNTOWN DUBAI SKYLINE
AND THE DUBAI WATER CANAL



THERAPEUTIC & DYNAMIC LIVING FOR ALL

We've worked closely with health and fitness experts to design spaces in which our residents can live their best lives, engaging in activities within a vibrant, healthy and go-getting community. With dedicated areas for yoga and a multitude of fitness classes, indoor-outdoor active zones and an array of eco-conscious exercise equipment. The Quayside ensures health and happiness is entwined with everyday life.



ELEGANCE AND COMFORT
WHILE CELEBRATING THE PLEASURES OF LIFE



**WHERE DYNAMISM MEETS
INDOOR-OUTDOOR LIVING**

The Quayside stands as a monument to Dubai's aspirational spirit. Here, moments of utter calm exist amid the heartbeat of city life, and the vibrant, cosmopolitan surroundings complement and enhance the sense of home imbued in each and every residence.



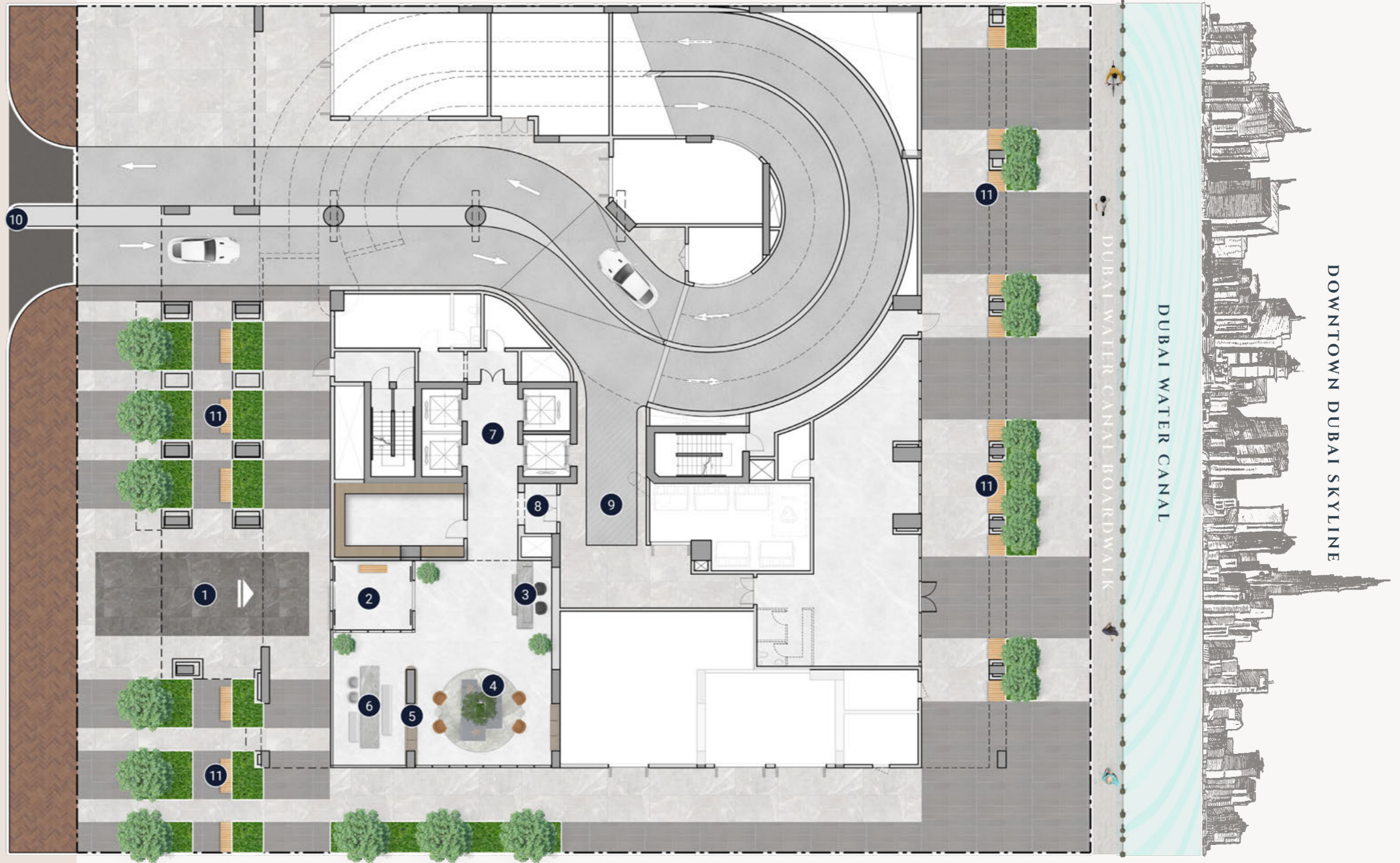
A SENSE OF FLOW THAT LEADS RESIDENTS
TO REMARKABLE VIEWS

WHERE RESORT-STYLE RELAXATION
MEETS CONVENIENT CONNECTIBILITY



GROUND FLOOR PLAN

- ① Main Entrance
- ② Lobby Entrance
- ③ Lobby Reception
- ④ Lobby Lounge
- ⑤ Library Wall
- ⑥ Move-in Truck Zone
- ⑦ Communal Table
- ⑧ Lift Lobby
- ⑨ Access to Lift and Lobby
- ⑩ Vehicle Entrance/Exit
- ⑪ Outdoor Seating Areas

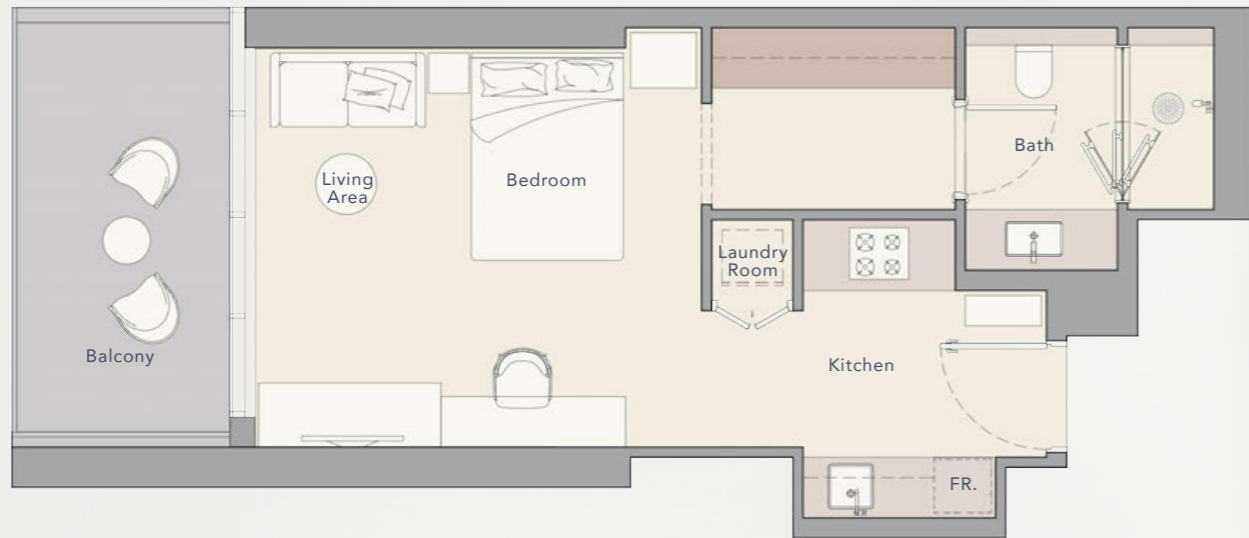


FIRST FLOOR PLAN

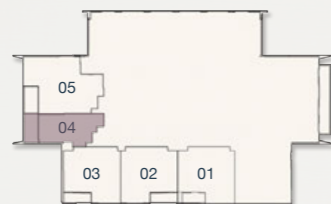
- ① Leisure & Lounge Pool
- ② Cascading Waterfall
- ③ Net Seating by the Pool
- ④ Pool Sun Loungers
- ⑤ Baja Shelf
- ⑥ Cabanas
- ⑦ Kids Pool
- ⑧ Outdoor Kids Play Area
- ⑨ Indoor Kids Play Area
- ⑩ Kids Bathroom
- ⑪ Male Spa Room
- ⑫ Female Spa Room
- ⑬ Zen Room
- ⑭ Fitness Studio
- ⑮ Clubhouse
- ⑯ Kitchenette
- ⑰ Outdoor Lounge Terrace
- ⑱ Outdoor Dining Area
- ⑲ Pizza Oven and Barbeque Area
- ⑳ Lift Lobby



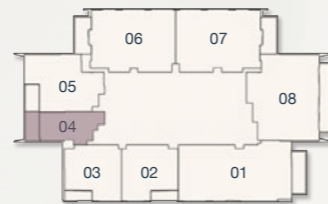
STUDIO



1ST FLOOR



2ND - 15TH FLOOR



Internal Living Area

Outdoor Living Area

Total Living Area

438.52 sq.ft.

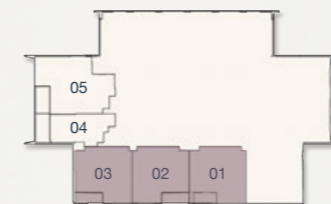
103.55 sq.ft.

542.07 sq.ft.

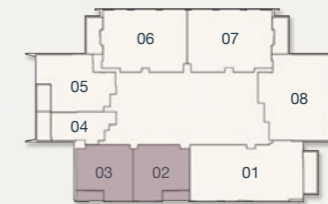
1 BEDROOM - TYPE A



1ST FLOOR



2ND - 15TH FLOOR



Internal Living Area

Outdoor Living Area

Total Living Area

700.30 sq.ft.

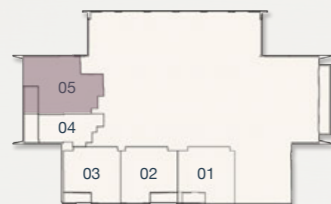
68.46 sq.ft.

768.76 sq.ft.

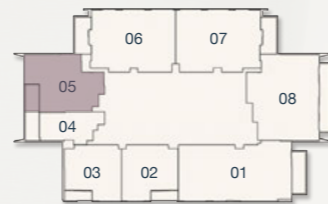
1 BEDROOM - TYPE B



1ST FLOOR



2ND - 15TH FLOOR



Internal Living Area

Outdoor Living Area

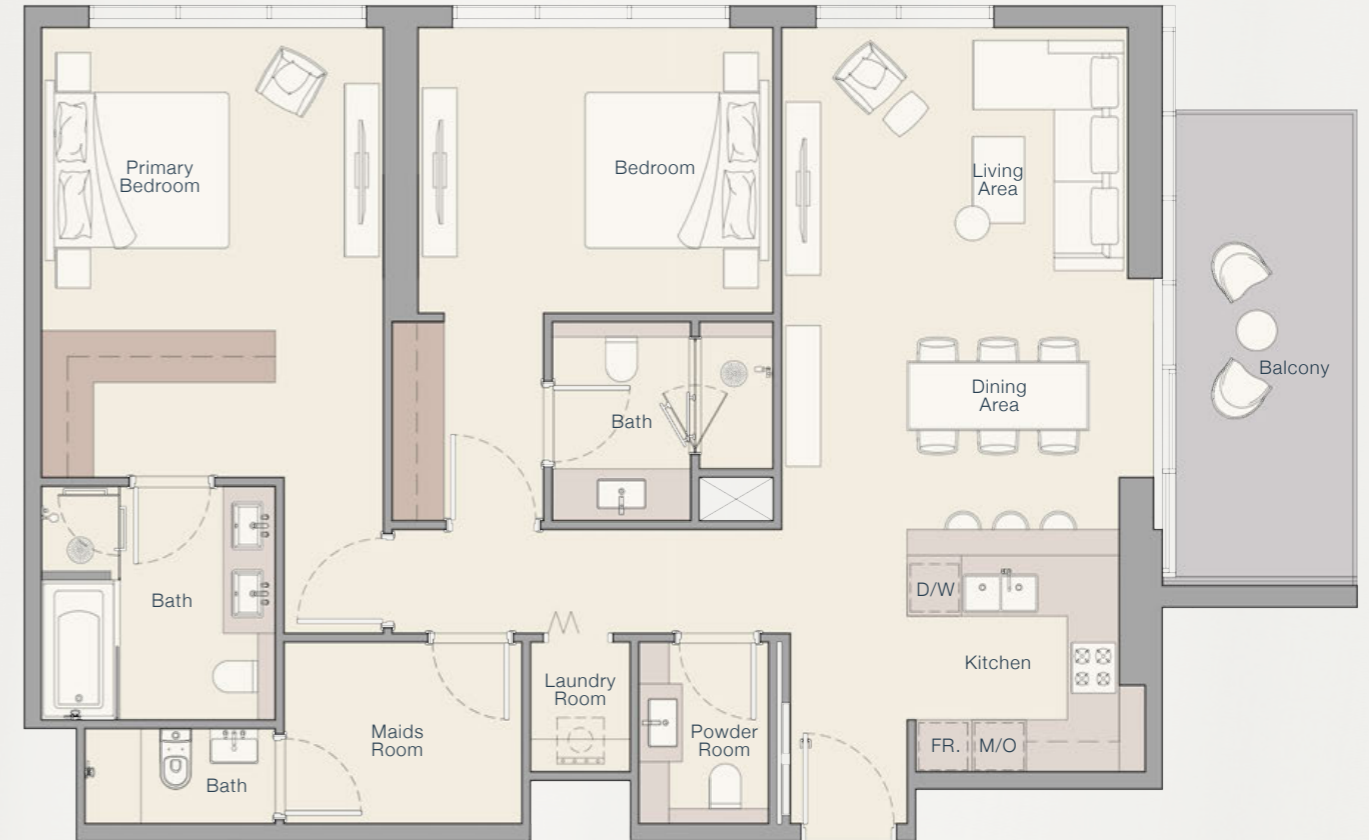
Total Living Area

893.19 sq.ft.

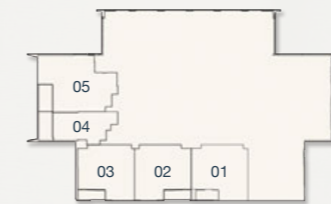
92.89 sq.ft.

986.08 sq.ft.

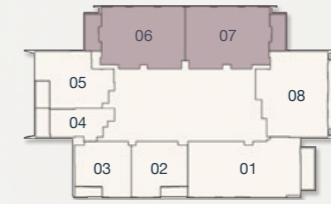
2 BEDROOM - TYPE A



1ST FLOOR



2ND - 15TH FLOOR



Internal Living Area

Outdoor Living Area

Total Living Area

1280.47 sq.ft.

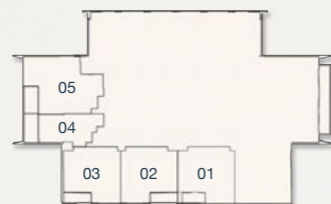
139.93 sq.ft.

1420.41 sq.ft.

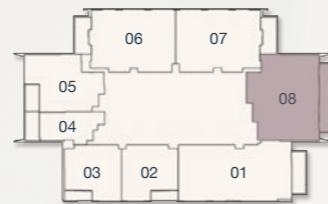
2 BEDROOM - TYPE B



1ST FLOOR

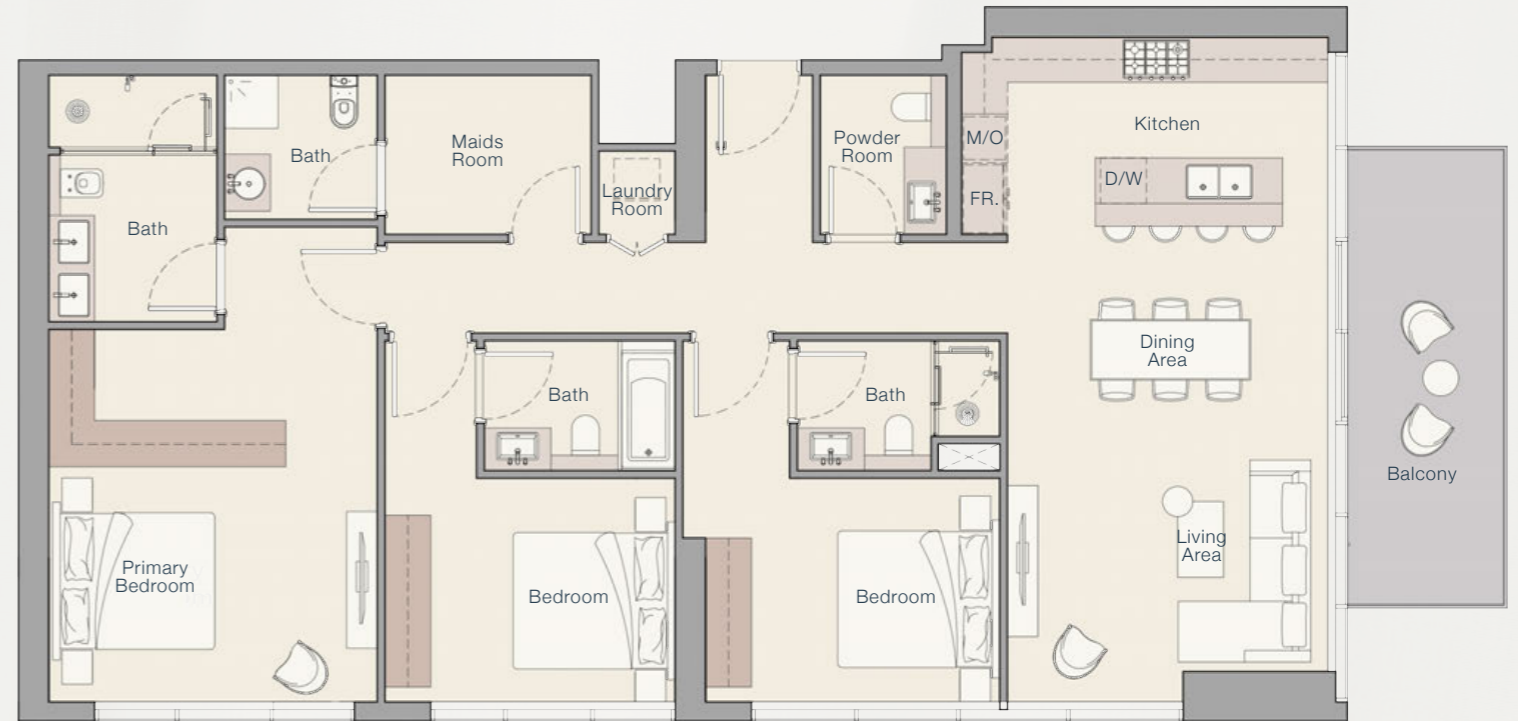


2ND - 15TH FLOOR

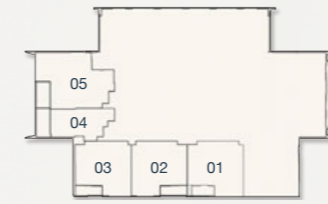


Internal Living Area	Outdoor Living Area	Total Living Area
1382.19 sq.ft.	185.68 sq.ft.	1567.87 sq.ft.

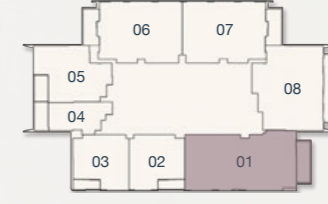
3 BEDROOM - TYPE A



1ST FLOOR



2ND - 15TH FLOOR



Internal Living Area	Outdoor Living Area	Total Living Area
1595.21 sq.ft.	144.02 sq.ft.	1739.23 sq.ft.

THE QUAYSIDE

BY ELLINGTON

800 8288
info@ellingtongroup.com

ELLINGTONPROPERTIES.AE

The renderings and visualizations contained in this brochure are provided for illustrative and marketing purposes. While the information provided is believed to be accurate and reliable at the time of printing, only the information contained in the final Sales and Purchase Agreement will have any legal effect.